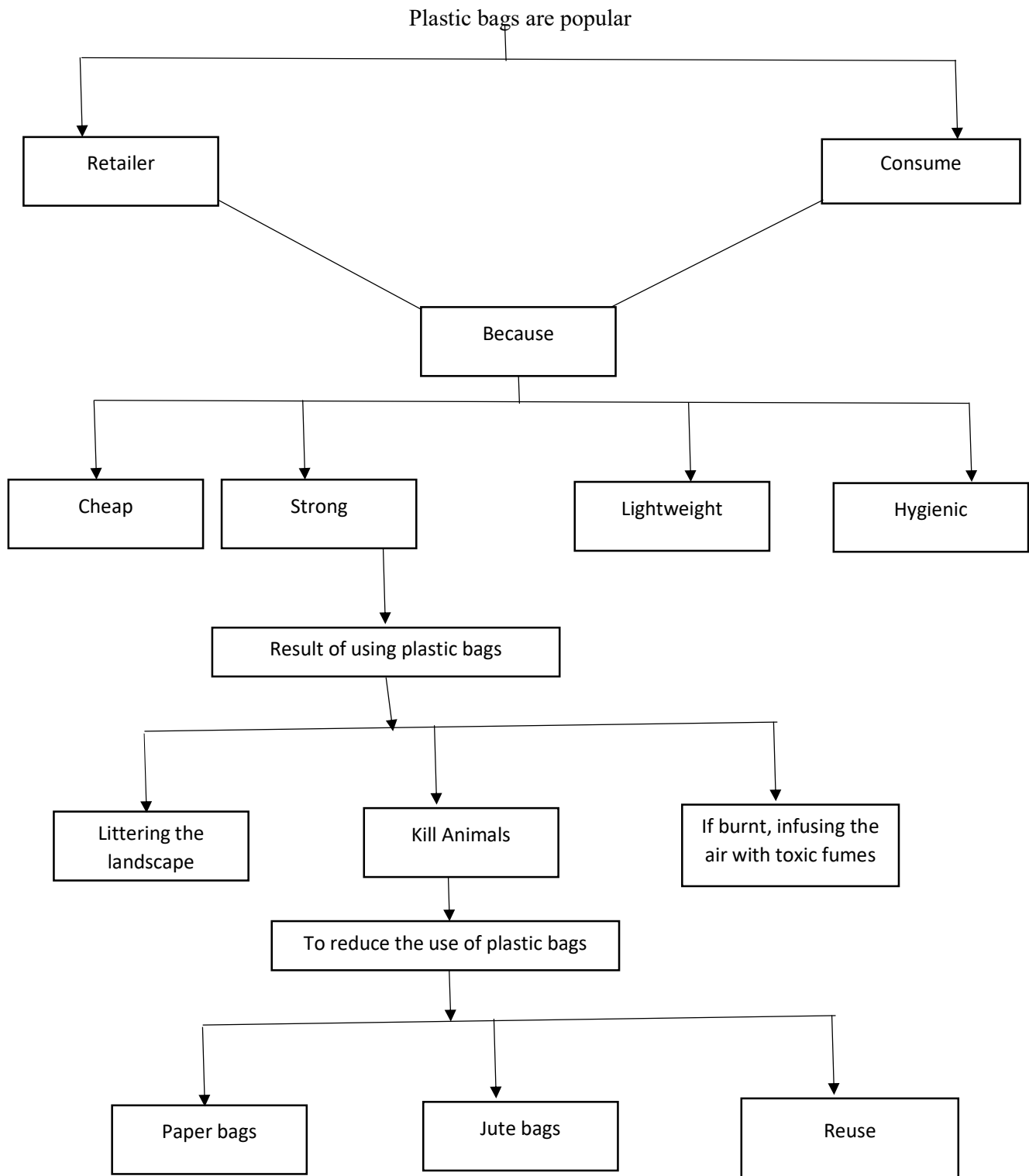


NOTE TAKING
DEFORESTATION

- 1) Deforestation is **a process of cutting trees to make space for industries and habitation for the ever-increasing human population.**
- 2) Adverse effects on the environment: a **disrupts the water cycle** b soil erosion c **green house effect** d **global warming.**
- 3) Trees absorb **water from the soil** and release **moisture** in the atmosphere.
- 4) Disturbance in water cycle causes **famine and drought because the earth gets heated up, breeding many problems.**
- 5) Green house gases are : a **the oxides of nitrogen** b methane c **carbon.**
- 6) Green house gases trap **atmospheric heat thus increasing the temperature of the Earth's surface.**
- 7) Global warming melts **the glaciers** b Ice at the poles
- 8) Global warming raises **the sea level.**
- 9) The end result of global warming is **the whole planet will be flooded and the earth will get completely covered by water.**
- 10) Deforestation deprives **animals of their source of food** to plant and animal life.

NOTE TAKING
THE HARMFUL EFFECTS OF PLASTIC BAGS

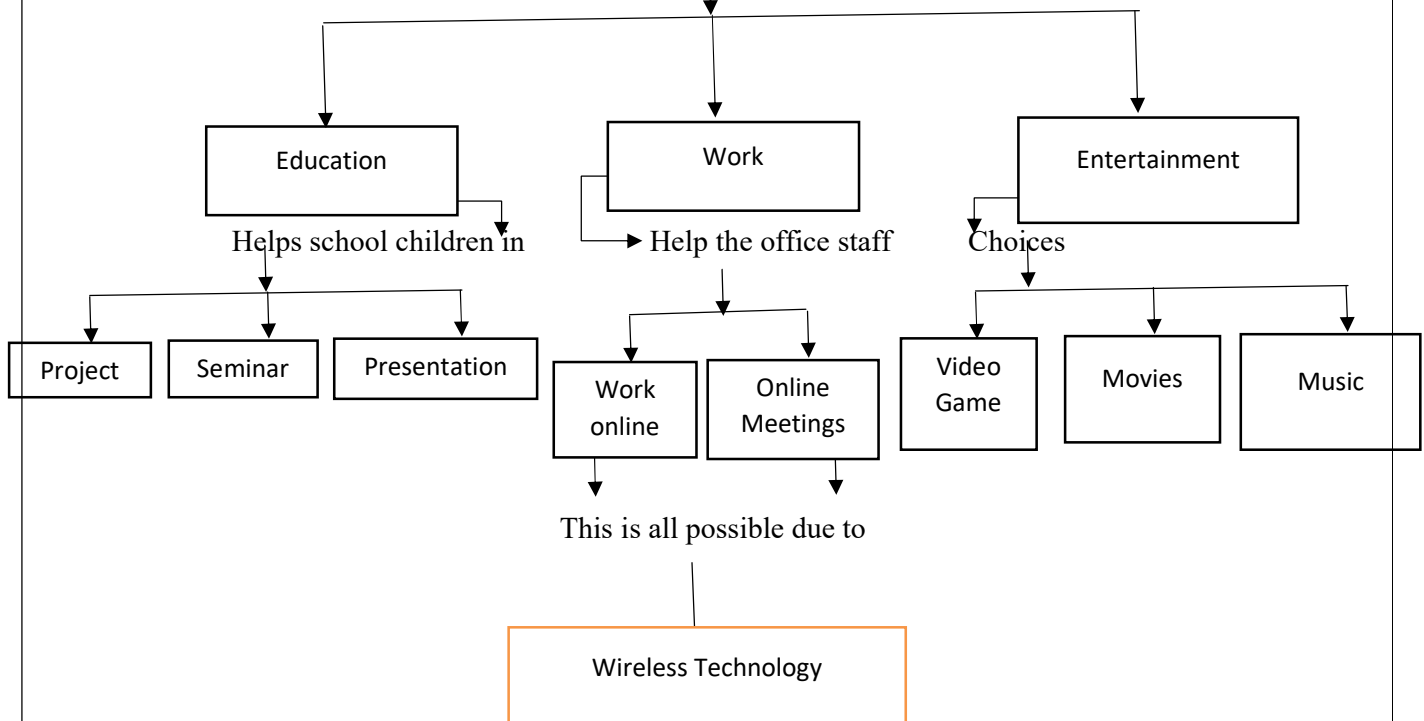


COMPUTERS IN SOCIETY

Computers also called

The artificial "Human Brain"

Plays major role in



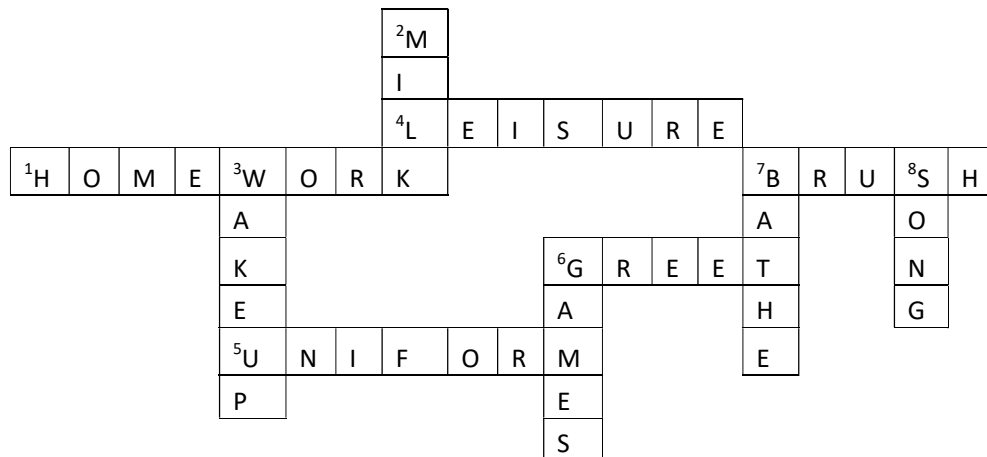
UNFORGETTABLE SALIM ALI

Frame five comprehension questions with the help of your classmate:

- 1) Who was Salim Ali?
- 2) Why Salim Ali is known for?
- 3) When was Salim Ali born?
- 4) Who was Salim Ali's childhood hero?
- 5) What present Salim Ali got from his uncle when he was ten?

Day to day usage

CROSSWORD :



THE END